

--	--	--	--	--

--	--	--	--

0420/12

May/June 2010

2 hours 30 minutes

No Additional Materials are required.

Write your Centre number, candidate number and name on all the work you hand in.
Write in dark blue or black pen.
You may use a soft pencil for any diagrams, graphs or rough working.
Do not use staples, paper clips, highlighters, glue or correction fluid.
DO NOT WRITE IN ANY BARCODES.

No marks will be awarded for using brand names of software packages or hardware.

At the end of the examination, fasten all your work securely together.

The number of marks is given in brackets [] at the end of each question or part question.

For Examiner's Use

This document consists of **19** printed pages and **1** blank page.

1 Explain, with examples where appropriate, the following **five** computer terms.

(a) buffer
.....
..... [2]

(b) batch processing
.....
..... [2]

(c) e-commerce
.....
..... [2]

(d) simulation
.....
..... [2]

(e) email
.....
..... [2]

2 A company making televisions has introduced robots to replace the human work force.

(a) Describe **three** effects this would have on the work force.

1

.....

2

.....

3

..... [3]

(b) Give **two** advantages to the company of introducing robots.

1

.....

2

..... [2]

(c) How could the robots be trained to assemble the televisions?

.....

.....

..... [1]

(d) A whole batch of televisions was produced with some of the parts missing. How could this error have been avoided?

.....

.....

..... [1]

3 State **four** tasks performed at the *analysis stage* in systems analysis.

1

.....

2

.....

3

.....

4

..... [4]

4 Give **four** features of a *Data Protection Act*.

1

.....

2

.....

3

.....

4

..... [4]

- 5 A bank is worried about computer crime.

One of their concerns is online access to customer accounts.

- (a) How can a customer's access details be discovered by criminals?

.....

.....

.....

.....

..... [2]

- (b) Why would a customer using a credit card for online shopping be more of a security risk than a customer using the same card in a shop?

.....

.....

.....

.....

..... [2]

- (c) Describe what measures the bank can take to safeguard customer accounts.

.....

.....

.....

.....

..... [2]

6 An expert system is being developed to help engineers diagnose faults in aero engines.

(a) Describe the steps taken to develop this new expert system.

.....

.....

.....

.....

.....

.....

.....

.....

..... [4]

(b) Another method used to identify and rectify faults is to train engineers using *virtual reality systems*.

(i) What is virtual reality?

.....

.....

..... [1]

(ii) What special hardware is used to interface with virtual reality systems?

.....

.....

..... [1]

- 7 A screen has been developed to allow the input of data into the following fields:
name, sex, address, date of birth and examination results.

(a) A first attempt at designing the screen is shown below:

Student Records	
Student name:	Sex:
Student address:	
.....	
Date of birth: / /	
Exam results: Subjects and Grades	
Type in NEXT to go to next student or BACK to go to previous student:	

This is not a very good input screen. Give **four** ways in which it could be improved.

1

.....

2

.....

3

.....

4

..... [4]

(b) (i) What is verification?

.....

.....

(ii) Which fields should be verified?

.....

..... [3]

- 8** A supermarket makes use of barcodes on all its goods as part of its automatic stock control system.

(a) Describe how the price is found for each item sold.

.....

.....

.....

.....

..... [2]

(b) The following are steps in the automatic stock control system.

Number the steps in the correct order.

if stock level \leq minimum stock level	
report printed out for the manager	
stock level reduced by 1	
new stock value written back to file	
more items are ordered automatically	

[4]

- 9** A factory uses a computer system to store information about customers, spare parts and general administration.

(a) Spare parts can be identified by selecting from diagrams on a computer screen.

Describe what hardware would be needed to allow the parts to be selected in this way.

.....

.....

.....

.....

..... [2]

- (b) The factory needs to buy a new printer. It has decided to buy either a dot matrix printer or an inkjet printer. Discuss the advantages and disadvantages of using both types of printer in this application.

For
Examiner's
Use

Dot matrix printer:

Advantages

.....

.....

.....

Disadvantages

.....

.....

..... [3]

Inkjet printer:

Advantages

.....

.....

.....

Disadvantages

.....

.....

..... [3]

- 10 A small company runs six cars in its fleet. They have produced a spreadsheet to compare running costs over a five month period:

For
Examiner's
Use

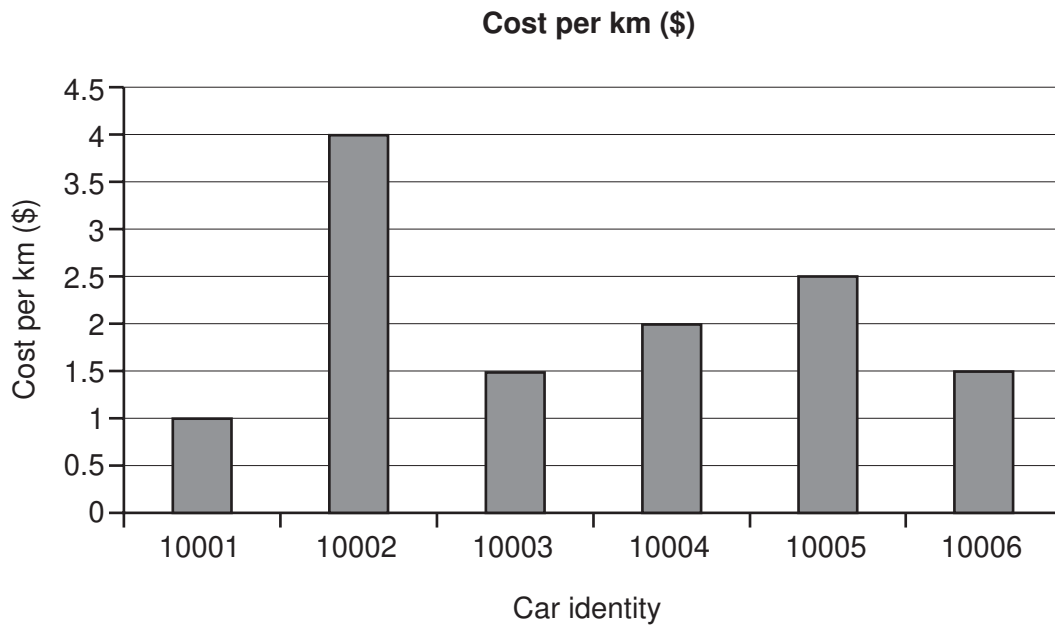
	A	B	C	D	E
1	Car Identity	Total number of km	Cost per km (\$)	Total cost (\$)	Average cost per month (\$)
2	10001	30 000	1.00	30 000	6 000
3	10002	20 000	4.00	80 000	16 000
4	10003	50 000	1.50	75 000	15 000
5	10004	30 000	2.00	60 000	12 000
6	10005	20 000	2.50	50 000	10 000
7	10006	30 000	1.50	45 000	9 000
8		Averages:	2.08	56 667	11 333

- (a) It was decided to print out the spreadsheet formulas from D2 to E8. Using the grid below, show what formulas would be printed:

	D	E
1	Total cost (\$)	Average cost per month (\$)
2		
3		
4		
5		
6		
7		
8		

[4]

(b) A graph of **Cost per km (\$)** was drawn:



(i) Which cells were highlighted to produce this graph?

.....
 [2]

(ii) Describe how the average value of 2.08 would be shown on the graph.

.....
 [1]

(c) The data in cell C6 was changed to 3.00.
 Which cells would be updated automatically?

.....
 [2]

For
Examiner's
Use

11 A database has been set up showing information about cars:

Car ref	No of doors	Engine (litres)	CO ₂ (g/km)	Fuel used (km/litre)	No of cylinders
A	3	1.4	145	15.3	4
B	4	2.0	193	12.3	4
C	5	2.5	231	10.9	6
D	3	2.0	190	11.2	6
E	4	1.3	120	17.5	4
F	5	1.8	180	14.6	4
G	4	3.0	240	9.5	6
H	4	1.2	115	19.7	3

- (a) Using **Car ref** only, write down which cars would be output if the following search condition was used:

(No of doors = 4) AND (Fuel used (km/litre) > 15)

.....
..... [2]

- (b) Write down a search condition to find out which cars have engines larger than 1.8 litres OR have CO₂ emissions higher than 150 g/km.

.....
..... [2]

- (c) The database is sorted in *ascending order* on **Fuel used (km/litre)**. Using **Car ref** only, write down the results of the sort.

.....
..... [2]

- 12 (a) State **two** items of hardware needed to enable a standard computer system to take part in video conferencing.

1

.....

2

..... [2]

- (b) State **two** additional items of software that would be needed for the video conferencing to take place.

1

.....

2

..... [2]

- (c) Describe **two** potential problems when using video conferencing.

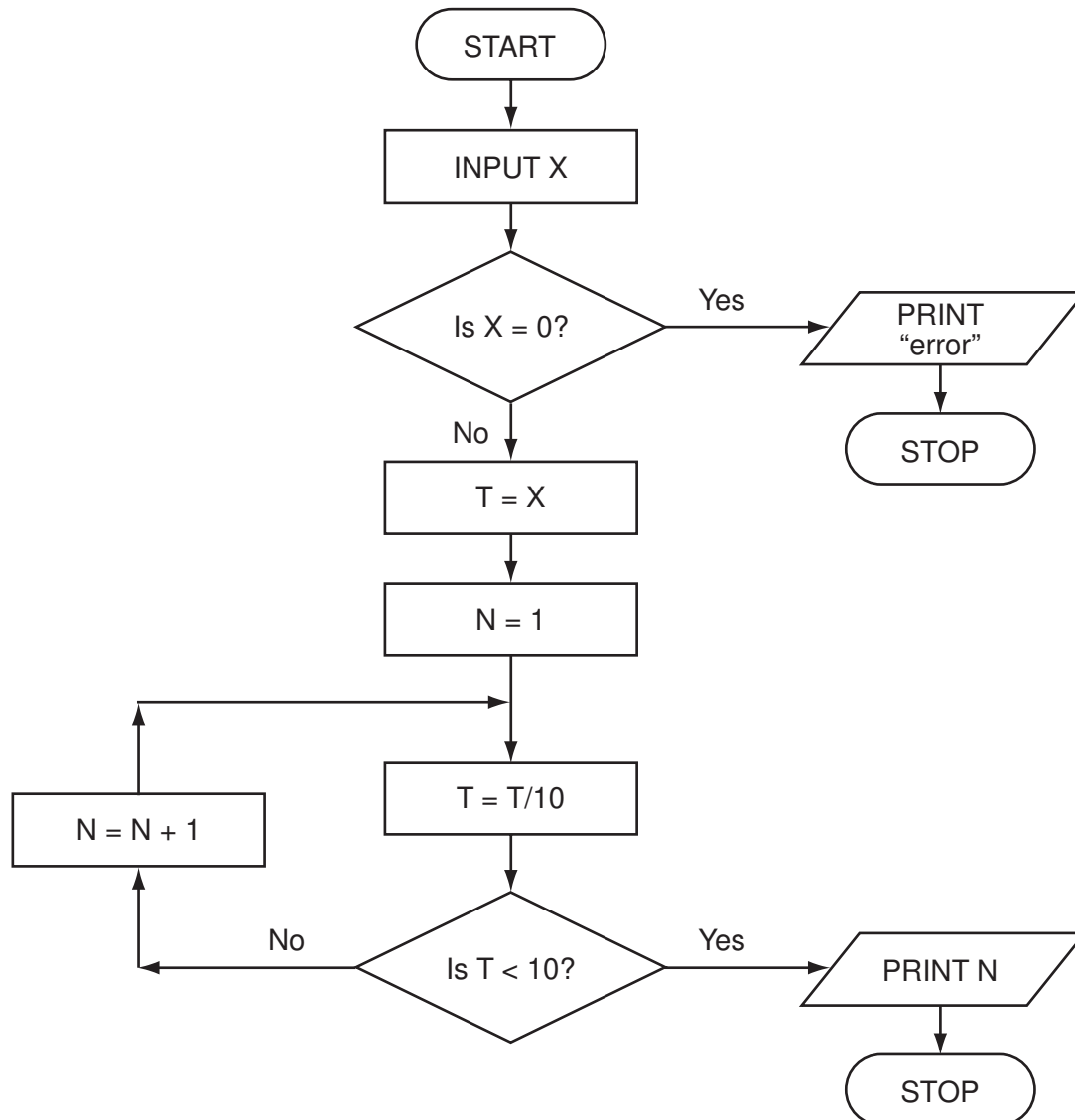
1

.....

2

..... [2]

13 Study the following flowchart very carefully:



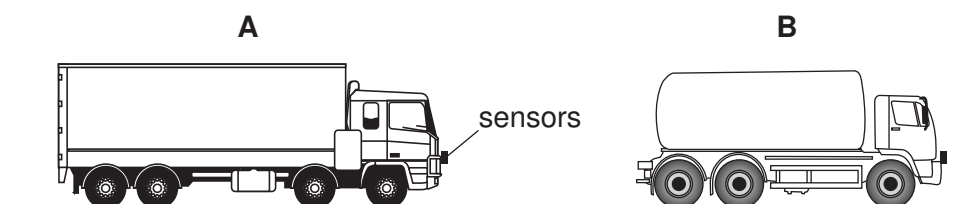
What output would you expect if the following data was input into the flowchart?

X	OUTPUT
-150	
540	
0	

[3]

- 14 A safety system has been developed to stop vehicles getting too close to each other on the road.

For
Examiner's
Use



If vehicle **A** gets too close to vehicle **B**, the brakes are automatically applied by a computer system in vehicle **A**.

- (a) What type of sensors could be used on the vehicles?

.....
..... [1]

- (b) Describe what the safety system does to constantly monitor how close the vehicle is to the vehicles in front and decide when to take action.

.....
.....
.....
.....
.....
.....
.....
.....
.....
.....
..... [4]

- (c) Describe **two** potential problems with this safety system.

1
.....
.....
2
.....
..... [2]

Instruction	Meaning
FORWARD <i>d</i>	Move <i>d</i> cm forward
BACKWARD <i>d</i>	Move <i>d</i> cm backward
LEFT <i>t</i>	Turn left <i>t</i> degrees
RIGHT <i>t</i>	Turn right <i>t</i> degrees
REPEAT <i>n</i>	Repeat the next set of instructions <i>n</i> times
ENDREPEAT	End of REPEAT loop
PENUP	Raise the pen
PENDOWN	Lower the pen

A 4x4 grid with a thick black path. The path starts at the bottom-left cell (row 4, column 1) and ends at the top-right cell (row 1, column 4). The path is labeled 'Start' and 'End' with arrows.

RIGHT 90

[illegible]

[5]

- inputs 50 numbers
- outputs how many of the numbers were > 100

[3]

- inputs 100 numbers
- finds the average of the input numbers
- outputs the average

[3]

BLANK PAGE

Permission to reproduce items where third-party owned material protected by copyright is included has been sought and cleared where possible. Every reasonable effort has been made by the publisher (UCLES) to trace copyright holders, but if any items requiring clearance have unwittingly been included, the publisher will be pleased to make amends at the earliest possible opportunity.

University of Cambridge International Examinations is part of the Cambridge Assessment Group. Cambridge Assessment is the brand name of University of Cambridge Local Examinations Syndicate (UCLES), which is itself a department of the University of Cambridge.

0420/12/M/J/10

WWW.XTREMEPAPERS.NET